



AFINIA 3D™

"Out-of-the-Box 3D Printing Experience for Educators, Engineers, and Hobbyists"



ES360

FAST, HIGHLY ACCURATE, WHITE LIGHT 3D SCANNER

The Afinia ES360 desktop 3D scanner creates printable 3D models with high accuracy for a range of creative 3D printing applications. The scanner is a perfect fit for educators, designers, and home hobbyists looking to expand the capabilities of their 3D printer.

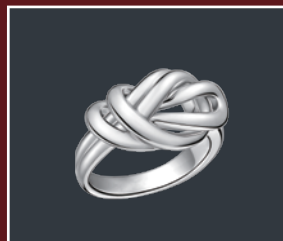
With a low price point and fast, accurate scanning (~0.1mm), the ES360 delivers details and performance similar to an industrial level scanner.



Industrial Parts



Art Sculptures



Jewel Models



Creative Models

www.AFINIA3D.com

| 888.215.3966

| sales@afinia.com

| Afinia™

AFINIA™ ES360 3D SCANNER



FAST, HIGHLY ACCURATE, WHITE LIGHT 3D SCANNER



High Accuracy

≤0.1mm accuracy with light phase shifting technology.



Two Scan Options

The only two-scan-mode scanner on the market with automatic scan and free scan modes.



Scan Small to Large

Automatic scan mode maximum scan size is 215x215x200mm. Free scan mode maximum scan size is 700x700x700mm.



Faster than Ever

Automatic scan takes less than 3 minutes to complete one circle, 3-4 times faster than similar desktop 3D scanners in the market with turnable scans.



Simple to Use

Anyone can scan; it's easy, with just one "click".



Ready to Print

Digital models created by the ES360 are ready to be printed on a 3D printer such as the award-winning Afinia H480 or H800.



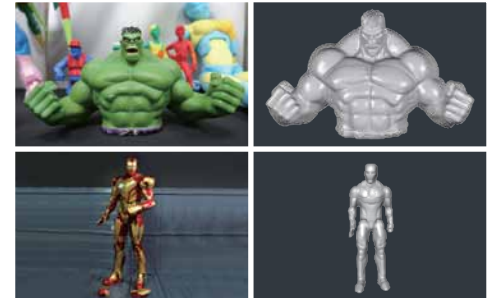
Eye Safety Lighting

White light scanning is far safer than laser scanning. The white light is created by a projector very similar to those used in classrooms and offices.

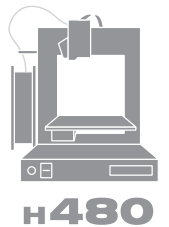


Portable

At less than 8 lbs (3.5kg), the ES360 can be taken anywhere.



Scans can be 3D Printed on:



Technical Specifications: **ES360**

Accuracy	≤0.1mm
Max. Scan Volume	Automatic scan: 215x215x200mm / Free scan: 700x700x700mm
Scan Speed	Automatic scan: <3mins / Free scan: <10sec (single range)
Point Distance	0.17mm ~ 0.2mm
Alignment Method	Automatic alignment / Manual alignment
Scan Mode	Automatic scan / Free scan
Printing Support	Yes
Resolution	1.3 Megapixel
Light Source	White light
Scanner Dimension	Scanner head size 246x126x60mm / Turn table 246x260x65mm
Weight	3.5kg (8lbs)
Power Consumption	50w
AC Input	100V~230V
Single Scan Range (free scan)	200x150mm
File Format	STL, ASC

System Support:

Windows 7 64-bit, Windows 8 64-bit, Windows 8.1 64-bit.

Minimum Computer Requirements:

Processor: Intel I3 CPU

RAM: 4GB

Free Hard Drive Space: 1GB

Graphics Card: GeForce GTX 640 or equivalent.

Must support multiple VGA or HDMI interfaces.

Graphics Memory: 1GB minimum

USB Ports: Must have 2 USB 2.0 ports

Screen Resolution: Minimum of 1024 x 800

Additional Recommended Computer Requirements:

Processor: Intel I5 CPU

RAM: 8GB

Free Hard Drive Space: 2GB

Graphics Card: GeForce GTX 760 or equivalent.

Must support multiple VGA or HDMI interfaces.